

GENERAL FEATURES

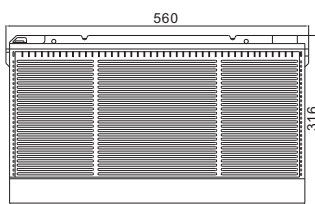
- **GEL Technology** - The success of DG batteries comes from the internationally superior Gel technology. It is ideal for standby or frequent cyclic discharge applications under extreme environments
- **Front Access Connection** - Front access connection for fast, easy installation and maintenance with standard width for 19' and 23' ETSI racks.
- **Long Service Life** - Especially designed for telecommunication use with 10+ years design life in float service. By combining the newly developed paste formula with up-to-date GEL structures, this range features 12 years design life.
- **Maintenance-Free, Non-Spillable** - Proven VRLA technology guarantees safe operation without maintenance and 'non-restricted article' status for transportation.
- **Designed-In Reliability** - Cutting-edge manufacturing and process control combined with meticulous quality assurance procedures guarantee consistent and dependable performance

PERFORMANCE SPECIFICATIONS

Nominal Voltage	12V(6 cells)	
Design Floating Life @25°C	12 Years	
Nominal Capacity @25°C	20 hour rate	185.0Ah
	9.25A to 10.50V	
	10 hour rate	175.0Ah
	17.5A to 10.50V	
	5 hour rate	150.0Ah
Internal Resistance	30.0A to 10.50V	
	3 hour rate	130.5Ah
	43.5A to 9.60V	
	1 hour rate	105.6Ah
Energy Density (20-hr. rate)	105.6A to 9.60V	
	Full Charged Battery@25°C	<4.0mΩ
Specific Energy (20-hr. rate)	100.36W-h/l	
	37.0W-h/kg	
Shelf Life (nominal capacity at 20°C)	1 Month	97%
	3 Months	91%
	6 Months	83%
Max Short-Duration Discharge Current	5 Sec	1850A
	Standby Use Charge (Constant Voltage) @25°C	
Cycle Use Charge (Constant Voltage) @25°C	Initial Charging Current	
	Less than 55.5A	
Operating Temperature Range	Voltage 13.6 - 13.8V	
	Initial Charging Current	
	Less than 55.5A	
Charge	Voltage 14.4 - 14.9V	
	-20°C to 50°C	
Discharge	-40°C to 60°C	

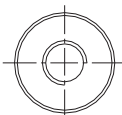
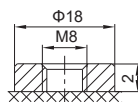
GENERAL FEATURES mm

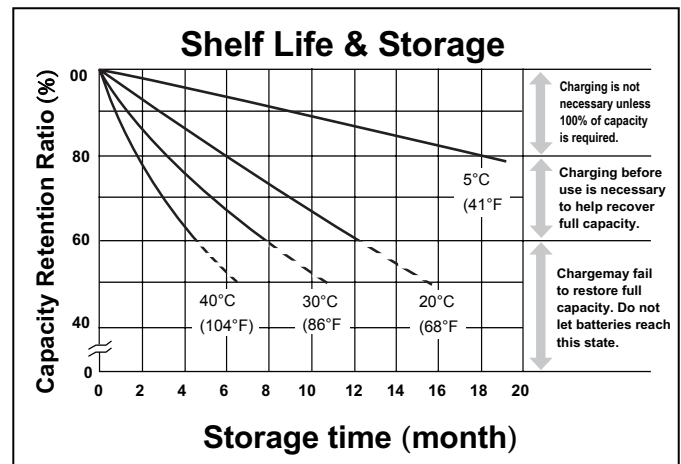
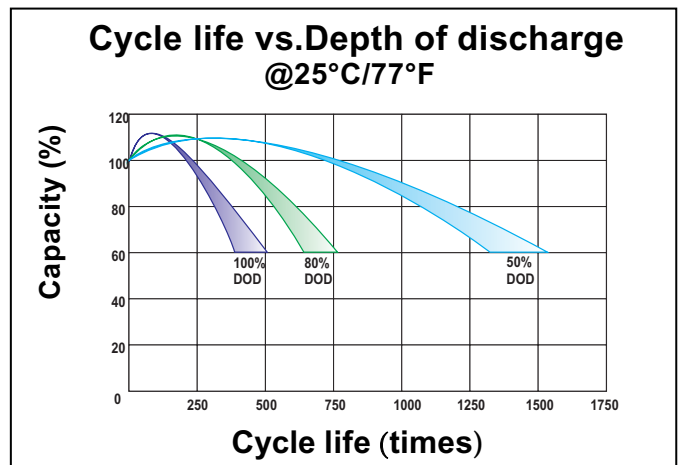
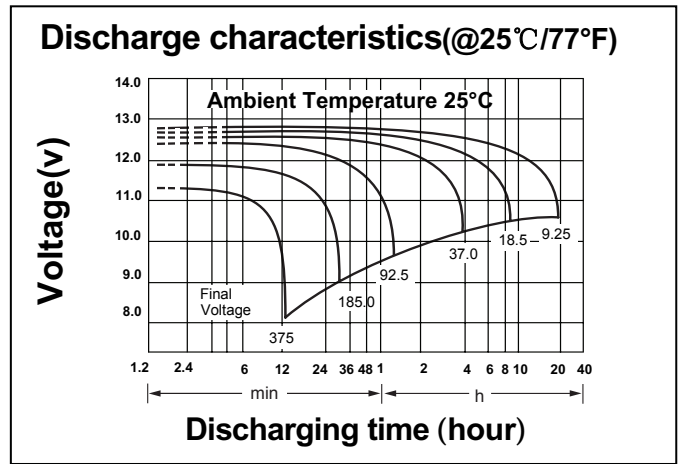
		Unit: mm	
Length	560±1	Total Height	316±1
Width	125±1	Weight(kg)	60.0±1
Height	316±1		



TERMINALS mm

F9 Terminal





CONSTANT CURRENT DISCHARGE RATINGS (Amperes at 25°C)

F.V./Time	15MIN	30MIN	1HR	2HR	3HR	4HR	5HR	8HR	10HR	20HR
1.60V	2 98 . 2	18 1 . 7	1 05 . 6	63 . 2	46 . 0	37 . 3	3 1 . 5	21 . 5	18 . 6	9 . 5 6
1.65V	2 90 . 4	17 7 . 7	1 03 . 6	62 . 3	45 . 3	36 . 9	3 1 . 1	21 . 3	18 . 5	9 . 4 9
1.70V	2 80 . 1	17 2 . 4	1 01 . 0	61 . 1	44 . 5	36 . 2	3 0 . 7	21 . 0	18 . 2	9 . 3 9
1.75V	2 66 . 7	16 5 . 5	9 7 . 6	59 . 5	43 . 5	35 . 4	3 0 . 0	20 . 6	17 . 9	9 . 2 5
1.80V	2 49 . 5	15 6 . 6	9 3 . 2	57 . 3	42 . 0	34 . 3	2 9 . 2	20 . 1	17 . 5	9 . 0 7
1.85V	2 27 . 8	14 5 . 1	8 7 . 4	54 . 5	40 . 2	32 . 9	2 8 . 1	19 . 4	16 . 9	8 . 8 3