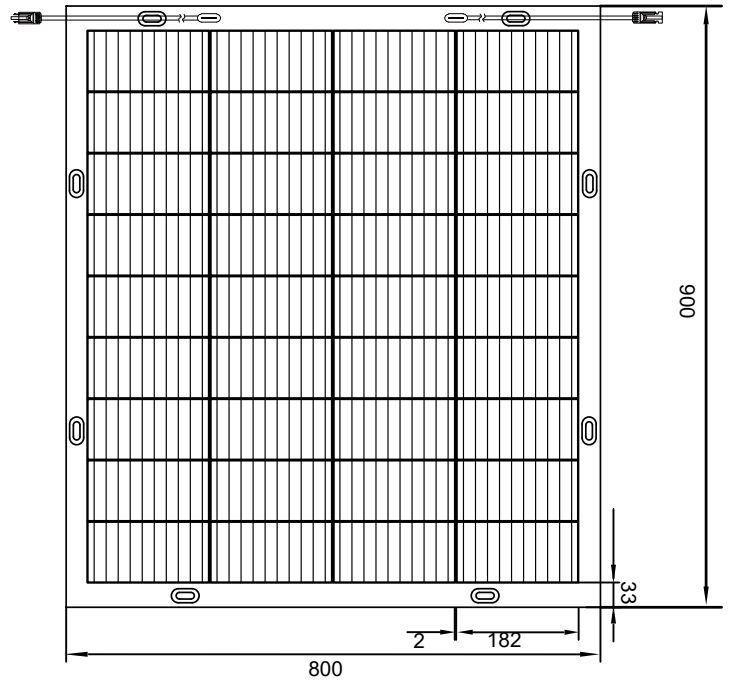
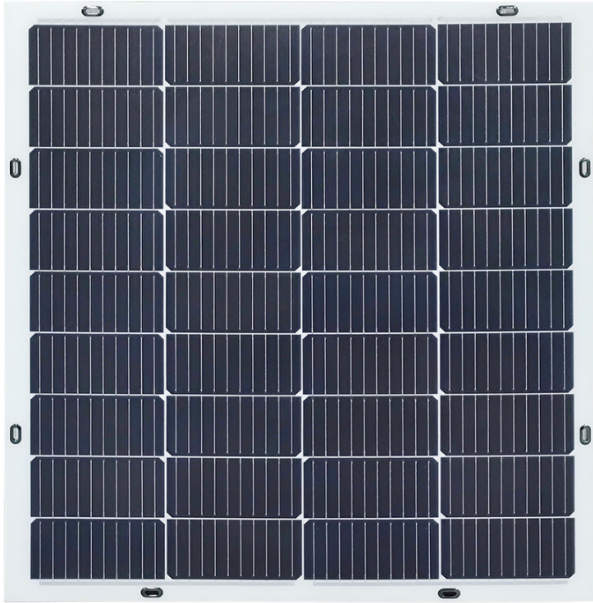
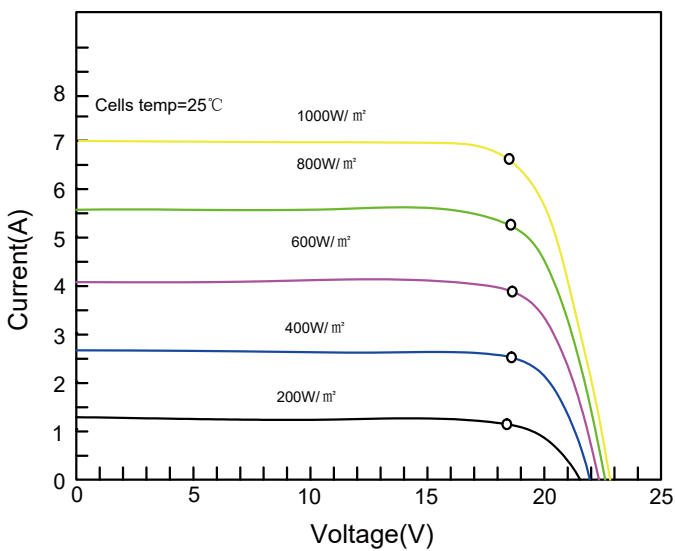


# FL-120W/18V

## High Efficiency Flexible Solar Modules



### Characteristics



### Module Diagram

#### Electrical Characteristics

Product code	FL-120W/18V
Maximum power(Pmax)	120W
Voltage at Pmax(Vmp)	18.4
Current at Pmax(Imp)	6.52
Open-circuit voltage(Voc)	22.78
Short -circuit current(Isc)	6.97
Power temperature coefficient	-0.38%/°C
Voltage temperature coefficient	-0.27%/°C
Cirrent temperature coefficient	+0.05%/°C
Cells Efficiency(%)	21.70%
The maximum system voltage	100VDC(IEC)
Output power tolerance	±3%

#### Specifications

Cells	A grade solar cell
No.of cells and connections	36(4X9)
Module dimension	900*800*3mm
Weight	2.45KG
Certification	CE,RoHS,ISO